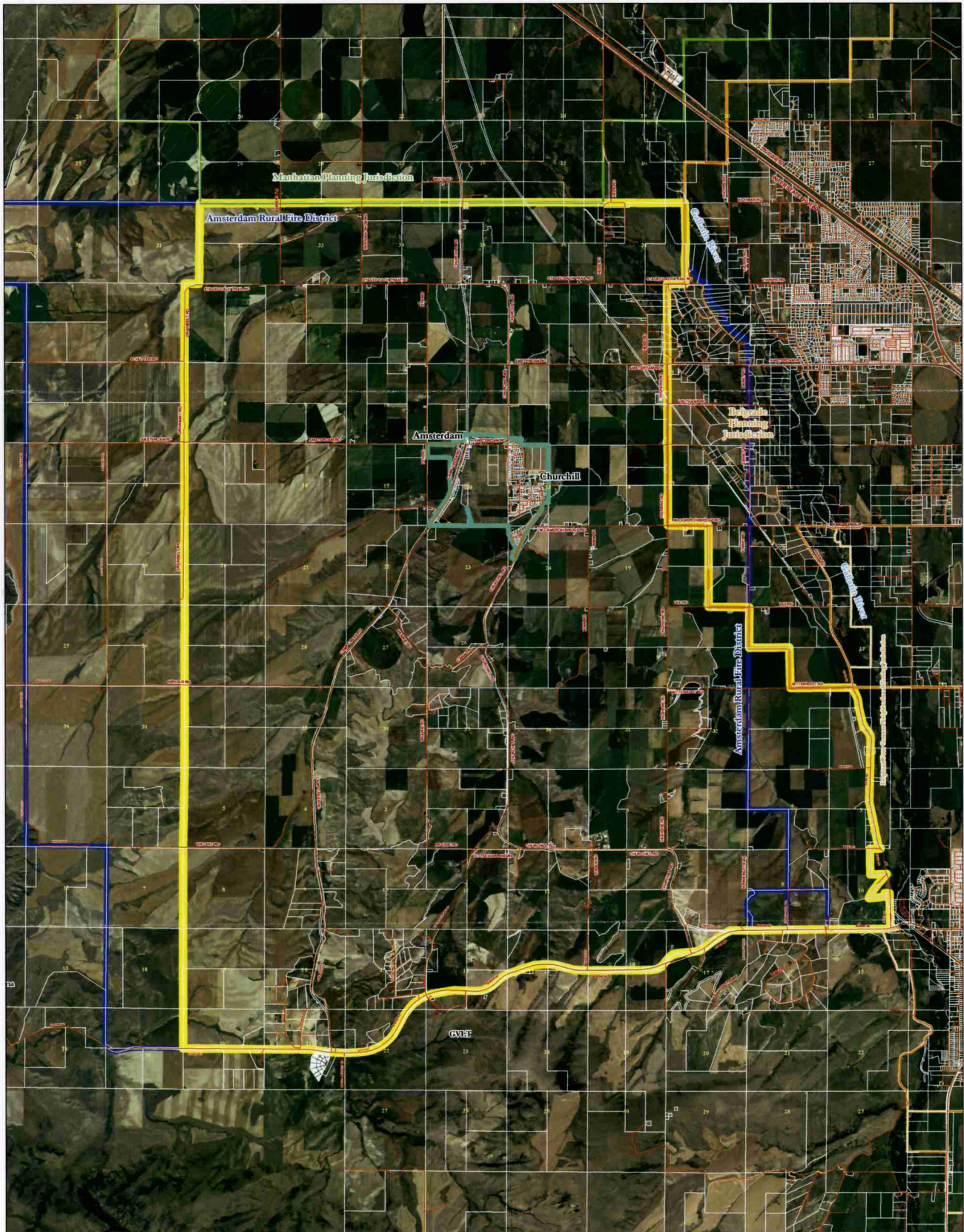


Proposed Amsterdam-Churchill Neighborhood Planning Area

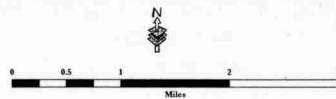
Gallatin County, MT

DRAFT
07/31/2008



NOTE: This map is a visual representation only and does not represent a survey. No liability is assumed as to the accuracy of the data delineated hereon. Aerial imagery from 2005 National Agriculture Imagery Program.

- Parcels
- Incorporated Cities and Towns
- Farmsteads
- Amsterdam/Churchill Boundary
- Amsterdam Rural Fire District
- Belgrade Jurisdictional Boundary
- Manhattan Jurisdictional Boundary
- Proposed Amsterdam/Churchill Neighborhood Planning Boundary



MAP PREPARED BY
GALLATIN COUNTY, MT
GIS DEPARTMENT AND
PLANNING DEPARTMENT

05/12/2007 : 07/31/2008
bw_20080731_amsterdam_churchill_wca_farmsteads_2005_NAIP.mxd